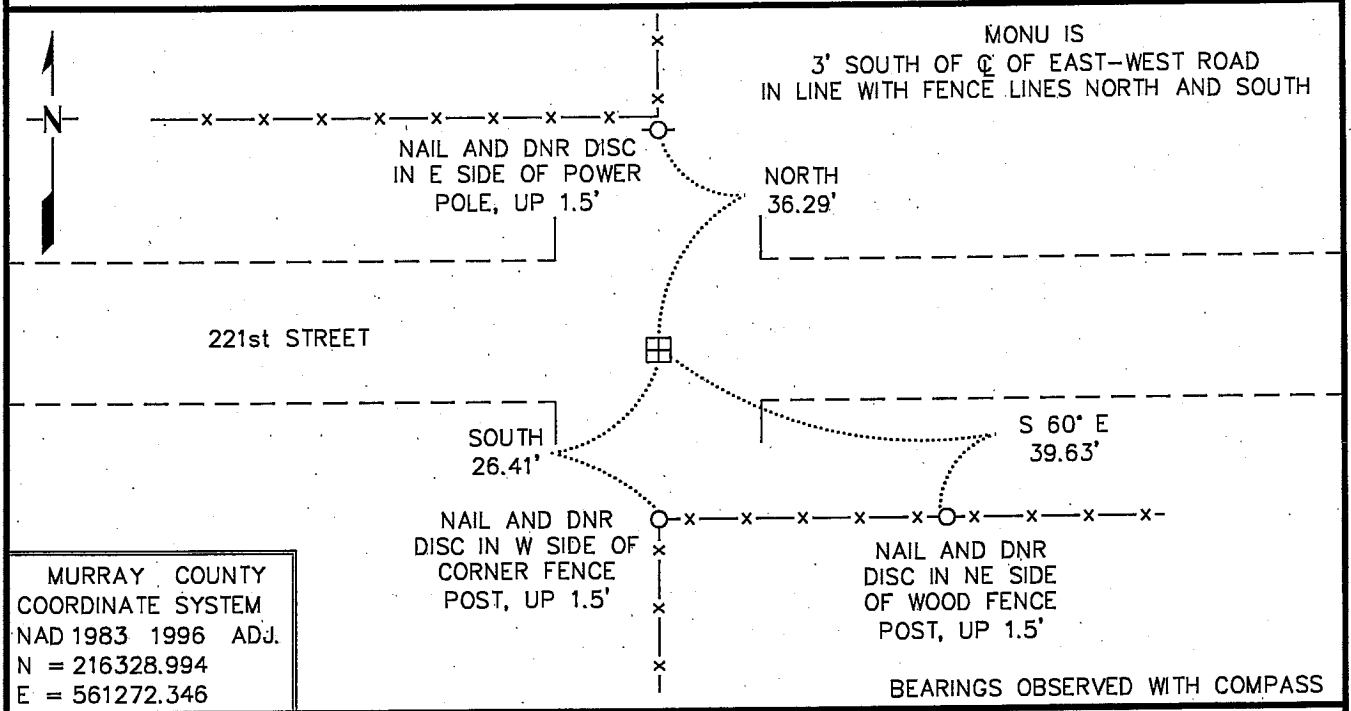


CERTIFICATE OF LOCATION OF GOVERNMENT CORNER

NORTH QUARTER Corner of Section 16, Township 108 N, Range 39 W
5th Principal Meridian, State of Minnesota, County of MURRAY

At the corner location shown on the sketch:

- On 7/28/2009 found a 8" X 12" X 16" STONE, DOWN 0.8'
DATE
- left monument as found, lowered monument, removed monument (explain)
- On 7/28/2009 Placed a RAILROAD SPIKE, DOWN 0.3', OVER STONE
DATE



Statement of evidence for this corner location is on back of this page. 8/31/2009
TRA00706.00.00.01

I certify that this document was researched and prepared by me or under my direct supervision.

SIGNATURE *Bruce W. Sheppard* DATE 9/14/09 License Number 17003

Title: Land Surveyor Professional Engineer County Surveyor County Engineer

The DNR Division of Lands and Minerals contacted the following for survey information:

Minnesota History Center in St. Paul
Murray County Recorder's Office
Murray County Highway Engineer's Office
Zieske Land Surveying, Inc. of Windom
Bueltel-Moseng Land Surveying of Marshall

1861 U.S. General Land Office notes, obtained from the Minnesota History Center, show the corner marked with a wood post with pits and mound.

1899 June 19, Surveyor's Record Book A, Page 85, obtained from the County Recorder's Office, contains a survey in Section 9 by J.W. Woolstencroft. Survey states the following about the corner:

"stone 6-8-16"

Survey does not indicate if the stone was found or set. The corner is shown:

2660 feet from the southeast corner of Section 9

The above information is also contained in a Surveyor's Record Book, obtained from the County Highway Engineer's Office.

1899 June 19, Murray County Highway Department section corner information website, states that a 6" x 18" x 16" stone was located at the corner. The following is also noted:

"call for more details"

1901 Surveyor's Record Book A, Pages 240 and 248, obtained from the County Recorder's Office, contains a survey by D.L. Bighorn, Redwood County Surveyor, which record was made on June 12, 1915, by J.R. Johnston, Murray County Surveyor, from original plat on file in the office of the Town Clerk of Holly Township. Survey shows corner but a description of what kind of monument was found or set is not given. The corner is shown:

2646.8 feet from the southeast corner of Section 9

2646.8 feet from the southwest corner of Section 9

The above information is also contained in a Surveyor's Record Book, obtained from the County Highway Engineer's Office.

1958 June 6, Surveyor's Record Book A, Page 85, obtained from the County Recorder's Office, contains a survey in Section 9 by J.W. Woolstencroft. The following is noted by the corner:

"center of grade 6-6-1958 M.E. Kaspman"

2009 July 28, the DNR Division of Lands and Minerals hired a backhoe to dig for evidence of the corner. An 8 inch by 12 inch by 16 inch stone was found 0.8 of a foot below the surface. Continued digging to a depth of 3 feet but no other evidence of a monument was found. Also, scanned the bottom of the excavation with an electronic metal detector but no metal attraction was obtained.

The excavation was 5 feet north-south by 6 feet east-west by 3 feet deep the center being on the centerline of an east-west and in line with fences north and south. During the excavation, natural ground was encountered at a depth of 1.2 feet.

The 8 inch by 12 inch by 16 inch stone was reset as found and a ½ inch by 18 inch long rebar was set on its northwest edge and a railroad spike was set over the stone and found it to be:

3.0 feet south of the centerline of an east-west road
in line with a fence lines north and south
2658.68 feet from the northeast corner of Section 16
2663.83 feet from the northwest corner of Section 16
3.82 feet south and 2.62 feet east of the lost position

Consulted with LaMoine Meyer, Holly Township Clerk, about the 1901 survey by D.L. Bighorn, and he said that the survey information that the Township has is the same as what's on file at the County Recorder's Office.

Analysis of the above information led the DNR Division of Lands and Minerals to conclude that the found 8 inch by 12 inch by 16 inch stone marks the location of the corner.